



Catalog Number See Table
UPC Number See Table
Description Split Bolt Connector - Tin Plated Copper w/Spacer

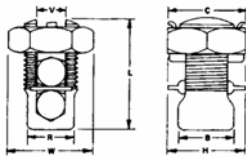


Features

- Manufactured from High Strength High Conductivity Electrolytic Copper Bronze Nut
- Electro Tin Plated
- Copper and Copperweld stranded wire
- Free running thread, Easy Grip Hex Nut
- Ribbed separator for excellent pullout force resistance
- Secure connection for all wire combinations in range

General

Wire Range: #8 Str thru 500 MCM
Material: High conductivity electrolytic copper
Nut Material: Bronze
Wire Combinations: See Table



Dimensional Information

See Table

Specifications

Temperature Rating: N/A
Voltage Rating: 600
Flammability Rating: N/A
Amp Rating: To Conductor

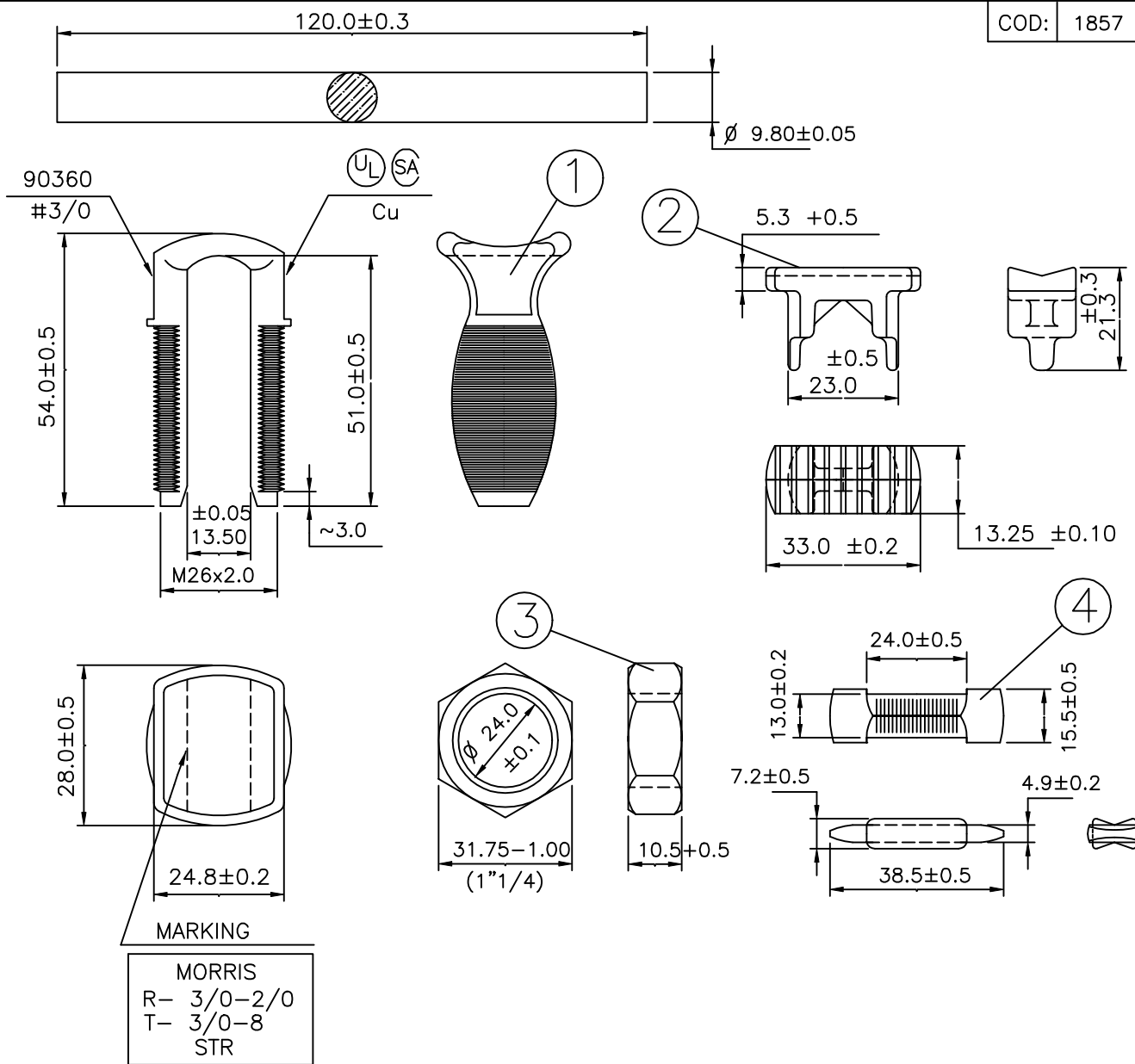
Packaging

Box Qty See Table

Certifications

UL Yes
cUL Yes
RoHS Yes

Cat No.	AWG	Max Run To Max Tap	Min Run To Min Tap	Max Run To Min Tap	Min Equal Tap & Run	Torque In-Lb	B	C	H	L	R	V	W	Box Qty
90360	3/0	3/0-3/0	2/0-8	3/0-8	1-1	500	1.1	1.25	1.52	2.2	0.976	0.531	1.45	25
90362	4/0-250	250-250	4/0-8	250-8	1-1	500	1.1	1.25	1.574	2.22	1.06	0.579	1.45	25
90364	350	350-350	350-1/0	350-1/0	2/0-2/0	650	1.22	1.5	1.771	2.56	1.18	0.7	1.73	12
90366	500	500-500	500-2/0	500-2/0	300-300	825	1.34	1.75	1.968	2.95	1.34	0.815	2.1	12



- 1- TORQUE: 5.76 kgf.m
- 2- PULL OUT: 158.77 kgf
- 3- FINISHING: TIN PLATED
- 4- Dimensions in mm.

MAXIMUM RUN TO
 MAXIMUM TAP: 3/0-3/0 STR AL Cu
 MINIMUM RUN TO
 MINIMUM TAP: 2/0-8 STR AL Cu
 MAXIMUM RUN TO
 MINIMUM TAP: 3/0-8 STR AL Cu
 MINIMUM EQUAL
 RUN-TAP: 1-1 STR AL Cu

REF.: MORRIS PRODUCTS INC.
 COD. 90360

4	SPACER	ELECTROLYTICAL COPPER		
3	NUT	BRONZE		
2	RIDER	BRONZE		
1	BODY	ELECTROLYTICAL COPPER		
N°	DENOMINATION	MATERIAL	P.L.	P.B.

Morris Products Inc.
 53 Carey Rd.
 Queensbury, NY 12804

02		21/10/02		Date	No
01		28/05/01		23/08/99	90360
No		Date			
Revisions				Appv'l	08/09/99
				01	DE: 01